

Lower Thames Crossing

6.2 Environmental Statement Figures

Figure 7.17 - Representative Viewpoints - Winter and Summer Views (6 of 8)

APFP Regulation 5(2)(a)
Infrastructure Planning
(Applications: Prescribed Forms and Procedure)
Regulations 2009
Volume 6

DATE: October 2022

Planning Inspectorate Scheme Ref: TR010032
Application Document Ref: TR010032/APP/6.2

VERSION: 1.0



Rev	Status	Rev. Date	Purpose of revision	Drawn	Chck'd	Apprv'd
P01	S8	05/08/2022	First Issued	BB	HP	SK

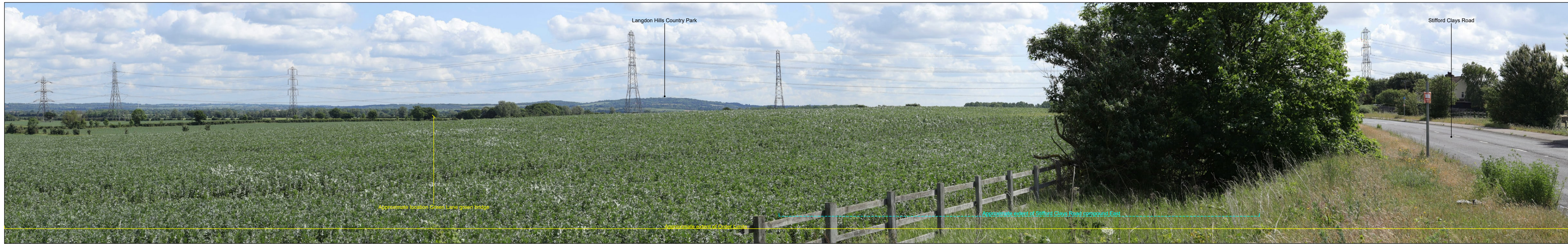
For location see Figure 7.16 - Visual Effects Drawing with Representative Viewpoint Locations			Winter Viewpoint (Top): N-27 Date and Time: 20/02/2019 15:23			Summer Viewpoint: N-27 Date and Time: 06/06/2019 10:23			
Camera:	Canon EOS 6D MkII	FL, Max Aperture:	50mm, 1.75	Distance to Order Limits:	0m	FL, Max Aperture:	50mm, 1.75	Distance to Order Limits:	0m
Lens:	Canon EF 50mm f/1.8 STM	Tripod Height:	1.5m	View Direction:	NNE	Tripod Height:	1.5m	View Direction:	NNE
Equipment:	Manfrotto MA 454 Micro Positioning Plate	Viewpoint Ground Height:	20.6m AOD	(Centre of View):	NNE	Viewpoint Ground Height:	20.6m AOD	(Centre of View):	NNE
	Manfrotto SBH-100 Ball Head	Viewpoint Grid Reference:	562184E, 181202N	GPS Accuracy:	5m	Viewpoint Grid Reference:	562184E, 181202N	GPS Accuracy:	5m



LOWER THAMES CROSSING
5th Floor Beaufort House
15 St Botolph Street
London EC3A 7DT

Project: LOWER THAMES CROSSING
Drawing title: Figure 7.17
Representative Viewpoints - Winter and Summer Views
Viewpoint N-27
Sheet 1 of 2

Drawn	BB	Date	- 05/08/2022	Status	S8	Revision	P01
Checked	HP	Date	- 05/08/2022	Application Document No. TR010032/APP/6.2			
Approved	SK	Date	- 05/08/2022	Drawing number			
HE540039-CJV-ELS-SZP_ZZ000000_Z-DR-LV-00067							



Rev	Status	Rev. Date	Purpose of revision	Drawn	Chck'd	Apprv'd
P01	S8	05/08/2022	First Issued	BB	HP	SK

For location see Figure 7.16 - Visual Effects Drawing with Representative Viewpoint Locations

Camera: Canon EOS 6D MkII
 Lens: Canon EF 50mm f/1.8 STM
 Equipment: Manfrotto MA 454 Micro Positioning Plate
 Manfrotto SBH-100 Ball Head

Winter Viewpoint (Top): N-27
 Date and Time: 20/02/2019 15:23

FL, Max Aperture: 50mm, 1.75
 Tripod Height: 1.5m
 Viewpoint Ground Height: 20.6m AOD
 Viewpoint Grid Reference: 562184E, 181202N

Distance to Order Limits: 0m
 View Direction (Centre of View): NNE
 GPS Accuracy: 5m

Summer Viewpoint: N-27
 Date and Time: 06/06/2019 10:23

FL, Max Aperture: 50mm, 1.75
 Tripod Height: 1.5m
 Viewpoint Ground Height: 20.6m AOD
 Viewpoint Grid Reference: 562184E, 181202N

Distance to Order Limits: 0m
 View Direction (Centre of View): NNE
 GPS Accuracy: 5m



LOWER THAMES CROSSING
 5th Floor Beaufort House
 15 St Botolph Street
 London EC3A 7DT

Project: LOWER THAMES CROSSING
 Drawing title: Figure 7.17
 Representative Viewpoints - Winter and Summer Views
 Viewpoint N-27
 Sheet 2 of 2

Drawn	BB	Date - 05/08/2022	Status	Revision
Checked	HP	Date - 05/08/2022	S8	P01
Approved	SK	Date - 05/08/2022	Application Document No. TR010032/APP/6.2	
Drawing number HE540039-CJV-ELS-SZP_ZZ000000_Z-DR-LV-00068				



Rev	Status	Rev. Date	Purpose of revision	Drawn	Chk'd	Appr'd
P01	S8	05/08/2022	First Issued	BB	HP	SK

For location see Figure 7.16 - Visual Effects Drawing with Representative Viewpoint Locations		Winter Viewpoint (Top): Date and Time:	N-28 20/02/2019 12:30	Summer Viewpoint: Date and Time:	N-28 06/06/2019 10:48
Camera:	Canon EOS 6D MkII	FL, Max Aperture:	50mm, 1.75	FL, Max Aperture:	50mm, 1.75
Lens:	Canon EF 50mm f/1.8 STM	Tripod Height:	1.5m	Tripod Height:	1.5m
Equipment:	Manfrotto MA 454 Micro Positioning Plate	Viewpoint Ground Height:	6.9m AOD	Viewpoint Ground Height:	6.9m AOD
	Manfrotto SBH-100 Ball Head	Viewpoint Grid Reference:	563262E, 182018N	Viewpoint Grid Reference:	563262E, 182018N
		Distance to Order Limits:	0m	Distance to Order Limits:	0m
		View Direction (Centre of View):	SW	View Direction (Centre of View):	SW
		GPS Accuracy:	5m	GPS Accuracy:	5m



LOWER THAMES CROSSING
5th Floor Beaufort House
15 St Botolph Street
London EC3A 7DT

Project LOWER THAMES CROSSING
Drawing title Figure 7.17
Representative Viewpoints - Winter and Summer Views
Viewpoint N-28
Sheet 1 of 1

Drawn	BB	Date - 05/08/2022	Status	Revision
Checked	HP	Date - 05/08/2022	S8	P01
Approved	SK	Date - 05/08/2022	Application Document No. TR010032/APP/6.2	
Drawing number		HE540039-CJV-ELS-SZP_ZZ000000_Z-DR-LV-00071		



Rev	Status	Rev. Date	Purpose of revision	Drawn	Chck'd	Apprv'd
P01	S8	05/08/2022	First Issued	BB	HP	SK

For location see Figure 7.16 - Visual Effects Drawing with Representative Viewpoint Locations

Camera: Canon EOS 6D MkII
 Lens: Canon EF 50mm f/1.8 STM
 Equipment: Manfrotto MA 454 Micro Positioning Plate
 Manfrotto SBH-100 Ball Head

Winter Viewpoint (Top): N-29
 Date and Time: 28/03/2019 10:43

FL, Max Aperture: 50mm, 1.75
 Tripod Height: 1.5m
 Viewpoint Ground Height: 3.5m AOD
 Viewpoint Grid Reference: 561309E, 181633N

Summer Viewpoint: N-29
 Date and Time: 05/06/2019 15:43

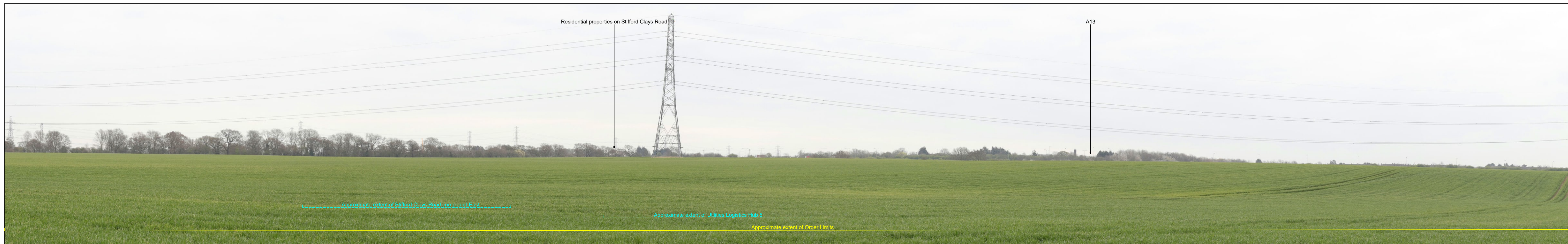
FL, Max Aperture: 50mm, 1.75
 Tripod Height: 1.5m
 Viewpoint Ground Height: 3.5m AOD
 Viewpoint Grid Reference: 561309E, 181633N

Client

LOWER THAMES CROSSING
 5th Floor Beaufort House
 15 St Botolph Street
 London EC3A 7DT

Project: LOWER THAMES CROSSING
 Drawing title: Figure 7.17
 Representative Viewpoints - Winter and Summer Views
 Viewpoint N-29
 Sheet 1 of 2

Drawn	BB	Date - 05/08/2022	Status	Revision
Checked	HP	Date - 05/08/2022	S8	P01
Approved	SK	Date - 05/08/2022	Application Document No. TR010032/APP/6.2	
Drawing number HE540039-CJV-ELS-SZP_ZZ000000_Z-DR-LV-00072				



Rev	Status	Rev. Date	Purpose of revision	Drawn	Chck'd	Apprv'd
P01	S8	05/08/2022	First Issued	BB	HP	SK

For location see Figure 7.16 - Visual Effects Drawing with Representative Viewpoint Locations

Camera: Canon EOS 6D MkII
 Lens: Canon EF 50mm f/1.8 STM
 Equipment: Manfrotto MA 454 Micro Positioning Plate
 Manfrotto SBH-100 Ball Head

Winter Viewpoint (Top): N-29
 Date and Time: 28/03/2019 10:48

FL, Max Aperture: 50mm, 1.75
 Tripod Height: 1.5m
 Viewpoint Ground Height: 3.5m AOD
 Viewpoint Grid Reference: 561309E, 181633N

Summer Viewpoint: N-29
 Date and Time: 05/06/2019 15:43

FL, Max Aperture: 50mm, 1.75
 Tripod Height: 1.5m
 Viewpoint Ground Height: 3.5m AOD
 Viewpoint Grid Reference: 561309E, 181633N

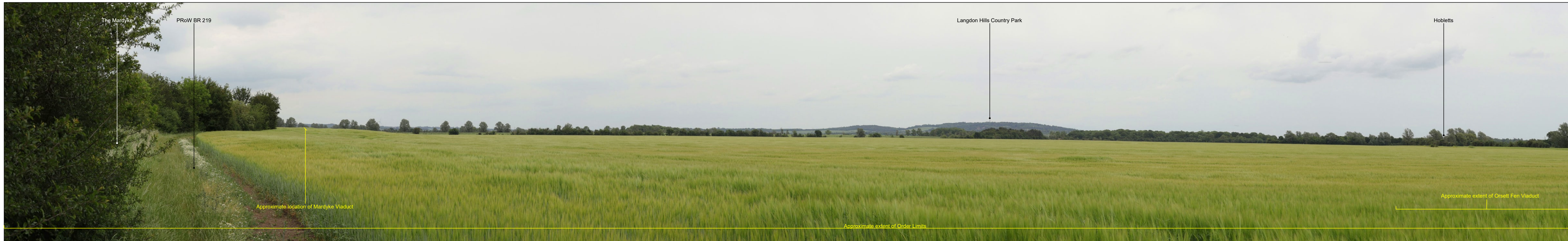
Distance to Order Limits: 105m
 View Direction (Centre of View): ENE
 GPS Accuracy: 5m



LOWER THAMES CROSSING
 5th Floor Beaufort House
 15 St Botolph Street
 London EC3A 7DT

Project: LOWER THAMES CROSSING
 Drawing title: Figure 7.17
 Representative Viewpoints - Winter and Summer Views
 Viewpoint N-29
 Sheet 2 of 2

Drawn	BB	Date - 05/08/2022	Status	Revision
Checked	HP	Date - 05/08/2022	S8	P01
Approved	SK	Date - 05/08/2022	Application Document No. TR010032/APP/6.2	
Drawing number HE540039-CJV-ELS-SZP_ZZ000000_Z-DR-LV-00073				



P01	S8	05/08/2022	First Issued	BB	HP	SK
Rev	Status	Rev. Date	Purpose of revision	Drawn	Chck'd	Apprv'd

For location see Figure 7.16 - Visual Effects Drawing with Representative Viewpoint Locations

Winter Viewpoint (Top): N-29a
Date and Time: 28/03/2019 11:25

Camera: Canon EOS 6D MkII
Lens: Canon EF 50mm f/1.8 STM
Equipment: Manfrotto MA 454 Micro Positioning Plate
Manfrotto SBH-100 Ball Head

FL, Max Aperture: 50mm, 1.75
Tripod Height: 1.5m
Viewpoint Ground Height: 10.8m AOD
Viewpoint Grid Reference: 562007E, 182846N

Distance to Order Limits: 0m
View Direction (Centre of View): ENE
GPS Accuracy: 5m

Summer Viewpoint: N-29a
Date and Time: 05/06/2019 16:35

FL, Max Aperture: 50mm, 1.75
Tripod Height: 1.5m
Viewpoint Ground Height: 10.8m AOD
Viewpoint Grid Reference: 562007E, 182846N

Distance to Order Limits: 0m
View Direction (Centre of View): ENE
GPS Accuracy: 5m



LOWER THAMES CROSSING
5th Floor Beaufort House
15 St Botolph Street
London EC3A 7DT

Project: LOWER THAMES CROSSING
Drawing title: Figure 7.17
Representative Viewpoints - Winter and Summer Views
Viewpoint N-29a
Sheet 1 of 2

Drawn	BB	Date - 05/08/2022	Status	Revision
Checked	HP	Date - 05/08/2022	S8	P01
Approved	SK	Date - 05/08/2022	Application Document No. TR010032/APP/6.2	
Drawing number HE540039-CJV-ELS-SZP_ZZ000000_Z-DR-LV-00074				



Rev	Status	Rev. Date	Purpose of revision	Drawn	Chck'd	Apprv'd
P01	S8	05/08/2022	First Issued	BB	HP	SK

For location see Figure 7.16 - Visual Effects Drawing with Representative Viewpoint Locations

Winter Viewpoint (Top): N-29a
Date and Time: 28/03/2019 11:25

Camera: Canon EOS 6D MkII
Lens: Canon EF 50mm f/1.8 STM
Equipment: Manfrotto MA 454 Micro Positioning Plate
Manfrotto SBH-100 Ball Head

FL, Max Aperture: 50mm, 1.75
Tripod Height: 1.5m
Viewpoint Ground Height: 10.8m AOD
Viewpoint Grid Reference: 562007E, 182846N

Distance to Order Limits: 0m
View Direction (Centre of View): ENE
GPS Accuracy: 5m

Summer Viewpoint: N-29a
Date and Time: 05/06/2019 16:35

FL, Max Aperture: 50mm, 1.75
Tripod Height: 1.5m
Viewpoint Ground Height: 10.8m AOD
Viewpoint Grid Reference: 562007E, 182846N

Distance to Order Limits: 0m
View Direction (Centre of View): ENE
GPS Accuracy: 5m



LOWER THAMES CROSSING
5th Floor Beaufort House
15 St Botolph Street
London EC3A 7DT

Project: LOWER THAMES CROSSING
Drawing title: Figure 7.17
Representative Viewpoints - Winter and Summer Views
Viewpoint N-29a
Sheet 2 of 2

Drawn	BB	Date - 05/08/2022	Status	Revision
Checked	HP	Date - 05/08/2022	S8	P01
Approved	SK	Date - 05/08/2022	Application Document No. TR010032/APP/6.2	
Drawing number HE540039-CJV-ELS-SZP_ZZ000000_Z-DR-LV-00075				



Rev	Status	Rev. Date	Purpose of revision	Drawn	Chck'd	Apprv'd
P01	S8	05/08/2022	First Issued	BB	HP	SK

For location see Figure 7.16 - Visual Effects Drawing with Representative Viewpoint Locations

Winter Viewpoint (Top):
 Date and Time: 20/02/2019 16:02
 Camera: Canon EOS 6D MkII
 Lens: Canon EF 50mm f/1.8 STM
 Equipment: Manfrotto MA 454 Micro Positioning Plate
 Manfrotto SBH-100 Ball Head

Summer Viewpoint:
 Date and Time: 04/06/2019 13:45
 FL, Max Aperture: 50mm, 1.75
 Tripod Height: 1.5m
 Viewpoint Ground Height: 15.7m AOD
 Viewpoint Grid Reference: 560525E, 182458N

Distance to Order Limits: 496m
 View Direction (Centre of View): NNE
 GPS Accuracy: 5m

FL, Max Aperture: 50mm, 1.75
 Tripod Height: 1.5m
 Viewpoint Ground Height: 15.7m AOD
 Viewpoint Grid Reference: 560525E, 182458N

Distance to Order Limits: 496m
 View Direction (Centre of View): NNE
 GPS Accuracy: 5m



Client
LOWER THAMES CROSSING
 5th Floor Beaufort House
 15 St Botolph Street
 London EC3A 7DT

Project
 LOWER THAMES CROSSING
Drawing title
 Figure 7.17
 Representative Viewpoints - Winter and Summer Views
 Viewpoint N-30
 Sheet 1 of 2

Drawn	BB	Date - 05/08/2022	Status	Revision
Checked	HP	Date - 05/08/2022	S8	P01
Approved	SK	Date - 05/08/2022	Application Document No. TR010032/APP/6.2	
Drawing number HE540039-CJV-ELS-SZP_ZZ000000_Z-DR-LV-00076				



Rev	Status	Rev. Date	Purpose of revision	Drawn	Chck'd	Apprv'd
P01	S8	05/08/2022	First Issued	BB	HP	SK

For location see Figure 7.16 - Visual Effects Drawing with Representative Viewpoint Locations

Winter Viewpoint (Top): N-30
Date and Time: 20/02/2019 16:02

Camera: Canon EOS 6D MkII
Lens: Canon EF 50mm f/1.8 STM
Equipment: Manfrotto MA 454 Micro Positioning Plate
Manfrotto SBH-100 Ball Head

FL, Max Aperture: 50mm, 1.75
Tripod Height: 1.5m
Viewpoint Ground Height: 15.7m AOD
Viewpoint Grid Reference: 560525E, 182458N

Distance to Order Limits: 496m
View Direction (Centre of View): NNE
GPS Accuracy: 5m

Summer Viewpoint: N-30
Date and Time: 04/06/2019 13:45

FL, Max Aperture: 50mm, 1.75
Tripod Height: 1.5m
Viewpoint Ground Height: 15.7m AOD
Viewpoint Grid Reference: 560525E, 182458N

Distance to Order Limits: 496m
View Direction (Centre of View): NNE
GPS Accuracy: 5m



LOWER THAMES CROSSING
5th Floor Beaufort House
15 St Botolph Street
London EC3A 7DT

Project: LOWER THAMES CROSSING
Drawing title: Figure 7.17
Representative Viewpoints - Winter and Summer Views
Viewpoint N-30
Sheet 2 of 2

Drawn	BB	Date - 05/08/2022	Status	Revision
Checked	HP	Date - 05/08/2022	S8	P01
Approved	SK	Date - 05/08/2022	Application Document No. TR010032/APP/6.2	
Drawing number HE540039-CJV-ELS-SZP_ZZ000000_Z-DR-LV-00077				



Rev	Status	Rev. Date	Purpose of revision	Drawn	Chck'd	Apprv'd
P01	S8	05/08/2022	First Issued	BB	HP	SK

For location see Figure 7.16 - Visual Effects Drawing with Representative Viewpoint Locations		Winter Viewpoint (Top): N-31 Date and Time: 19/04/2022 09:11	Summer Viewpoint: N-31 Date and Time: 14/06/2022 13:49
Camera: Canon EOS 6D MkII	FL, Max Aperture: 50mm, 1.75	Distance to Order Limits: 0m	FL, Max Aperture: 50mm, 1.75
Lens: Canon EF 50mm f/1.8 STM	Tripod Height: 1.5m	View Direction: W	Tripod Height: 1.5m
Equipment: Manfrotto MA 454 Micro Positioning Plate	Viewpoint Ground Height: 5.6m AOD	(Centre of View): W	Viewpoint Ground Height: 5.6m AOD
Manfrotto SBH-100 Ball Head	Viewpoint Grid Reference: 563045E, 183147N	GPS Accuracy: 5m	Viewpoint Grid Reference: 563045E, 183147N
			GPS Accuracy: 5m



LOWER THAMES CROSSING
 5th Floor Beaufort House
 15 St Botolph Street
 London EC3A 7DT

Project: LOWER THAMES CROSSING
 Drawing title: Figure 7.17
 Representative Viewpoints - Winter and Summer Views
 Viewpoint N-31
 Sheet 1 of 2

Drawn	BB	Date - 05/08/2022	Status	Revision
Checked	HP	Date - 05/08/2022	S8	P01
Approved	SK	Date - 05/08/2022	Application Document No. TR010032/APP/6.2	
Drawing number		HE540039-CJV-ELS-SZP_ZZ000000_Z-DR-LV-00078A		



Rev	Status	Rev. Date	Purpose of revision	Drawn	Chck'd	Apprv'd
P01	S8	05/08/2022	First Issued	BB	HP	SK

For location see Figure 7.16 - Visual Effects Drawing with Representative Viewpoint Locations		Winter Viewpoint (Top): N-31 Date and Time: 19/04/2022 09:11		Summer Viewpoint: N-31 Date and Time: 14/06/2022 13:49	
Camera:	Canon EOS 6D MkII	FL, Max Aperture:	50mm, 1.75	Distance to Order Limits:	0m
Lens:	Canon EF 50mm f/1.8 STM	Tripod Height:	1.5m	Tripod Height:	1.5m
Equipment:	Manfrotto MA 454 Micro Positioning Plate	Viewpoint Ground Height:	5.6m AOD	Viewpoint Ground Height:	5.6m AOD
	Manfrotto SBH-100 Ball Head	Viewpoint Grid Reference:	563045E, 183147N	Viewpoint Grid Reference:	563045E, 183147N
		View Direction (Centre of View):	W	View Direction (Centre of View):	W
		GPS Accuracy:	5m	GPS Accuracy:	5m



LOWER THAMES CROSSING
 5th Floor Beaufort House
 15 St Botolph Street
 London EC3A 7DT

Project: LOWER THAMES CROSSING
 Drawing title: Figure 7.17
 Representative Viewpoints - Winter and Summer Views
 Viewpoint N-31
 Sheet 2 of 2

Drawn	BB	Date - 05/08/2022	Status	Revision
Checked	HP	Date - 05/08/2022	S8	P01
Approved	SK	Date - 05/08/2022	Application Document No. TR010032/APP/6.2	
Drawing number HE540039-CJV-ELS-SZP_ZZ000000_Z-DR-LV-00078B				



Rev	Status	Rev. Date	Purpose of revision	Drawn	Chck'd	Apprv'd
P01	S8	05/08/2022	First Issued	BB	HP	SK

For location see Figure 7.16 - Visual Effects Drawing with Representative Viewpoint Locations

Winter Viewpoint (Top): N-32
Date and Time: 28/03/2019 12:15

Camera: Canon EOS 6D MkII
Lens: Canon EF 50mm f/1.8 STM
Equipment: Manfrotto MA 454 Micro Positioning Plate
Manfrotto SBH-100 Ball Head

FL, Max Aperture: 50mm, 1.75
Tripod Height: 1.5m
Viewpoint Ground Height: 21.5m AOD
Viewpoint Grid Reference: 561992E, 183489N

Distance to Order Limits: 0m
View Direction: NE
(Centre of View): NE
GPS Accuracy: 5m

Summer Viewpoint: N-32
Date and Time: 05/06/2019 17:00

FL, Max Aperture: 50mm, 1.75
Tripod Height: 1.5m
Viewpoint Ground Height: 21.5m AOD
Viewpoint Grid Reference: 561992E, 183489N

Distance to Order Limits: 0m
View Direction: NE
(Centre of View): NE
GPS Accuracy: 5m

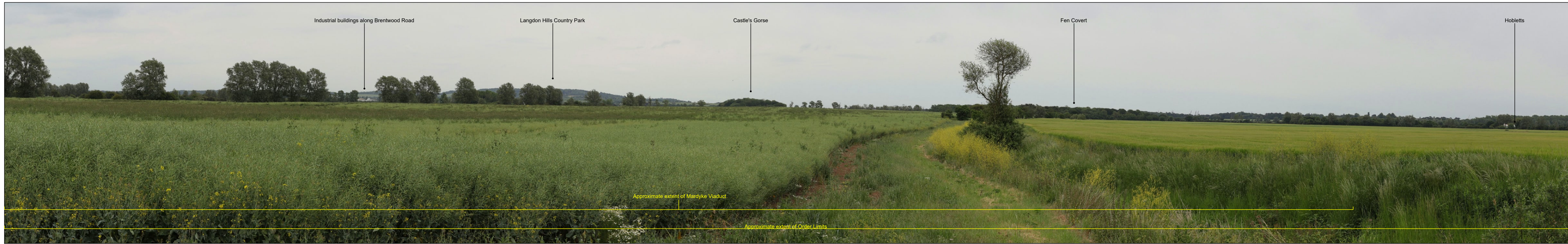


Client
LOWER THAMES CROSSING
5th Floor Beaufort House
15 St Botolph Street
London EC3A 7DT

Project
LOWER THAMES CROSSING

Drawing title
Figure 7.17
Representative Viewpoints - Winter and Summer Views
Viewpoint N-32
Sheet 1 of 2

Drawn	BB	Date - 05/08/2022	Status	Revision
Checked	HP	Date - 05/08/2022	S8	P01
Approved	SK	Date - 05/08/2022	Application Document No. TR010032/APP/6.2	
Drawing number		HE540039-CJV-ELS-SZP_ZZ000000_Z-DR-LV-00079		



Rev	Status	Rev. Date	Purpose of revision	Drawn	Chck'd	Apprv'd
P01	S8	05/08/2022	First Issued	BB	HP	SK

For location see Figure 7.16 - Visual Effects Drawing with Representative Viewpoint Locations		Winter Viewpoint (Top): N-32 Date and Time: 28/03/2019 12:15		Summer Viewpoint: N-32 Date and Time: 05/06/2019 17:00	
Camera:	Canon EOS 6D MkII	FL, Max Aperture:	50mm, 1.75	Distance to Order Limits:	0m
Lens:	Canon EF 50mm f/1.8 STM	Tripod Height:	1.5m	View Direction:	NE
Equipment:	Manfrotto MA 454 Micro Positioning Plate	Viewpoint Ground Height:	21.5m AOD	(Centre of View):	NE
	Manfrotto SBH-100 Ball Head	Viewpoint Grid Reference:	561992E, 183489N	GPS Accuracy:	5m



LOWER THAMES CROSSING
 5th Floor Beaufort House
 15 St Botolph Street
 London EC3A 7DT

Project: LOWER THAMES CROSSING
 Drawing title: Figure 7.17
 Representative Viewpoints - Winter and Summer Views
 Viewpoint N-32
 Sheet 2 of 2

Drawn	BB	Date	- 05/08/2022	Status	S8	Revision	P01
Checked	HP	Date	- 05/08/2022	Application Document No. TR010032/APP/6.2			
Approved	SK	Date	- 05/08/2022	Drawing number			
HE540039-CJV-ELS-SZP_ZZ000000_Z-DR-LV-00080							



Rev	Status	Rev. Date	Purpose of revision	Drawn	Chck'd	Apprv'd
P01	S8	05/08/2022	First Issued	BB	HP	SK

For location see Figure 7.16 - Visual Effects Drawing with Representative Viewpoint Locations

Camera: Canon EOS 6D MkII
 Lens: Canon EF 50mm f/1.8 STM
 Equipment: Manfrotto MA 454 Micro Positioning Plate
 Manfrotto SBH-100 Ball Head

Winter Viewpoint (Top): N-33
 Date and Time: 21/02/2019 16:36

FL, Max Aperture: 50mm, 1.75
 Tripod Height: 1.5m
 Viewpoint Ground Height: 4.3m AOD
 Viewpoint Grid Reference: 562452E, 184590N

View Direction (Centre of View): SW
 GPS Accuracy: 5m

Summer Viewpoint: N-33
 Date and Time: 05/06/2019 17:33

FL, Max Aperture: 50mm, 1.75
 Tripod Height: 1.5m
 Viewpoint Ground Height: 4.3m AOD
 Viewpoint Grid Reference: 562452E, 184590N

View Direction (Centre of View): SW
 GPS Accuracy: 5m



LOWER THAMES CROSSING
 5th Floor Beaufort House
 15 St Botolph Street
 London EC3A 7DT

Project: LOWER THAMES CROSSING
 Drawing title: Figure 7.17
 Representative Viewpoints - Winter and Summer Views
 Viewpoint N-33
 Sheet 1 of 2

Drawn	BB	Date - 05/08/2022	Status	Revision
Checked	HP	Date - 05/08/2022	S8	P01
Approved	SK	Date - 05/08/2022	Application Document No. TR010032/APP/6.2	
Drawing number		HE540039-CJV-ELS-SZP_ZZ000000_Z-DR-LV-00081		



Rev	Status	Rev. Date	Purpose of revision	Drawn	Chck'd	Apprv'd
P01	S8	05/08/2022	First Issued	BB	HP	SK

For location see Figure 7.16 - Visual Effects Drawing with Representative Viewpoint Locations		Winter Viewpoint (Top): N-33 Date and Time: 21/02/2019 16:36		Summer Viewpoint: N-33 Date and Time: 05/06/2019 17:33	
Camera:	Canon EOS 6D MkII	FL, Max Aperture:	50mm, 1.75	Distance to Order Limits:	550m
Lens:	Canon EF 50mm f/1.8 STM	Tripod Height:	1.5m	View Direction	SW
Equipment:	Manfrotto MA 454 Micro Positioning Plate	Viewpoint Ground Height:	4.3m AOD	(Centre of View):	SW
	Manfrotto SBH-100 Ball Head	Viewpoint Grid Reference:	562452E, 184590N	GPS Accuracy:	5m



LOWER THAMES CROSSING
 5th Floor Beaufort House
 15 St Botolph Street
 London EC3A 7DT

Project: LOWER THAMES CROSSING
 Drawing title: Figure 7.17
 Representative Viewpoints - Winter and Summer Views
 Viewpoint N-33
 Sheet 2 of 2

Drawn	BB	Date - 05/08/2022	Status	Revision
Checked	HP	Date - 05/08/2022	S8	P01
Approved	SK	Date - 05/08/2022	Application Document No. TR010032/APP/6.2	
Drawing number HE540039-CJV-ELS-SZP_ZZ000000_Z-DR-LV-00082				



Rev	Status	Rev. Date	Purpose of revision	Drawn	Chck'd	Apprv'd
P01	S8	05/08/2022	First Issued	BB	HP	SK

For location see Figure 7.16 - Visual Effects Drawing with Representative Viewpoint Locations

Winter Viewpoint (Top): N-34
Date and Time: 21/02/2019 16:11

Camera: Canon EOS 6D MkII
Lens: Canon EF 50mm f/1.8 STM
Equipment: Manfrotto MA 454 Micro Positioning Plate
Manfrotto SBH-100 Ball Head

FL, Max Aperture: 50mm, 1.75
Tripod Height: 1.5m
Viewpoint Ground Height: 17.8m AOD
Viewpoint Grid Reference: 563363E, 185699N

Distance to Order Limits: 1600m
View Direction (Centre of View): SW
GPS Accuracy: 5m

Summer Viewpoint: N-34
Date and Time: 05/06/2019 09:37

FL, Max Aperture: 50mm, 1.75
Tripod Height: 1.5m
Viewpoint Ground Height: 17.8m AOD
Viewpoint Grid Reference: 563363E, 185699N

Distance to Order Limits: 1600m
View Direction (Centre of View): SW
GPS Accuracy: 5m



LOWER THAMES CROSSING
5th Floor Beaufort House
15 St Botolph Street
London EC3A 7DT

Project: LOWER THAMES CROSSING
Drawing title: Figure 7.17
Representative Viewpoints - Winter and Summer Views
Viewpoint N-34
Sheet 1 of 1

Drawn	BB	Date - 05/08/2022	Status	Revision
Checked	HP	Date - 05/08/2022	S8	P01
Approved	SK	Date - 05/08/2022	Application Document No. TR010032/APP/6.2	
Drawing number HE540039-CJV-ELS-SZP_ZZ000000_Z-DR-LV-00083				



P01	S8	05/08/2022	First Issued	BB	HP	SK
Rev	Status	Rev. Date	Purpose of revision	Drawn	Chck'd	Apprv'd

For location see Figure 7.16 - Visual Effects Drawing with Representative Viewpoint Locations

Camera: Canon EOS 6D MkII
 Lens: Canon EF 50mm f/1.8 STM
 Equipment: Manfrotto MA 454 Micro Positioning Plate
 Manfrotto SBH-100 Ball Head

Winter Viewpoint (Top): N-35
 Date and Time: 20/02/2019 16:00

FL, Max Aperture: 50mm, 1.75
 Tripod Height: 1.5m
 Viewpoint Ground Height: 24.1m AOD
 Viewpoint Grid Reference: 559985E, 183131N

Distance to Order Limits: 250m
 View Direction (Centre of View): NNE
 GPS Accuracy: 5m

Summer Viewpoint: N-35
 Date and Time: 04/06/2019 14:18

FL, Max Aperture: 50mm, 1.75
 Tripod Height: 1.5m
 Viewpoint Ground Height: 24.1m AOD
 Viewpoint Grid Reference: 559985E, 183131N

Distance to Order Limits: 250m
 View Direction (Centre of View): NNE
 GPS Accuracy: 5m



Client

LOWER THAMES CROSSING
 5th Floor Beaufort House
 15 St Botolph Street
 London EC3A 7DT

Project LOWER THAMES CROSSING

Drawing title Figure 7.17
 Representative Viewpoints - Winter and Summer Views
 Viewpoint N-35
 Sheet 1 of 3

Drawn	BB	Date - 05/08/2022	Status	Revision
Checked	HP	Date - 05/08/2022	S8	P01
Approved	SK	Date - 05/08/2022	Application Document No. TR010032/APP/6.2	
Drawing number		HE540039-CJV-ELS-SZP_ZZ000000_Z-DR-LV-00084		



Rev	Status	Rev. Date	Purpose of revision	Drawn	Chck'd	Apprv'd
P01	S8	05/08/2022	First Issued	BB	HP	SK

For location see Figure 7.16 - Visual Effects Drawing with Representative Viewpoint Locations		Winter Viewpoint (Top):	N-35
Camera: Canon EOS 6D MkII		Date and Time:	20/02/2019 16:00
Lens: Canon EF 50mm f/1.8 STM		FL, Max Aperture:	50mm, 1.75
Equipment: Manfrotto MA 454 Micro Positioning Plate		Tripod Height:	1.5m
Manfrotto SBH-100 Ball Head		Viewpoint Ground Height:	24.1m AOD
		Viewpoint Grid Reference:	559985E, 183131N
		Distance to Order Limits:	250m
		View Direction (Centre of View):	NNE
		GPS Accuracy:	5m

Summer Viewpoint:		N-35
Date and Time:		04/06/2019 14:18
FL, Max Aperture:		50mm, 1.75
Tripod Height:		1.5m
Viewpoint Ground Height:		24.1m AOD
Viewpoint Grid Reference:		559985E, 183131N
Distance to Order Limits:		250m
View Direction (Centre of View):		NNE
GPS Accuracy:		5m

Client

LOWER THAMES CROSSING
 5th Floor Beaufort House
 15 St Botolph Street
 London EC3A 7DT

Project LOWER THAMES CROSSING
 Drawing title Figure 7.17
 Representative Viewpoints - Winter and Summer Views
 Viewpoint N-35
 Sheet 2 of 3

Drawn	BB	Date - 05/08/2022	Status	Revision
Checked	HP	Date - 05/08/2022	S8	P01
Approved	SK	Date - 05/08/2022	Application Document No. TR010032/APP/6.2	
Drawing number		HE540039-CJV-ELS-SZP_ZZ000000_Z-DR-LV-00085		



Rev	Status	Rev. Date	Purpose of revision	Drawn	Chck'd	Apprv'd
P01	S8	05/08/2022	First Issued	BB	HP	SK

For location see Figure 7.16 - Visual Effects Drawing with Representative Viewpoint Locations

Camera: Canon EOS 6D MkII
 Lens: Canon EF 50mm f/1.8 STM
 Equipment: Manfrotto MA 454 Micro Positioning Plate
 Manfrotto SBH-100 Ball Head

Winter Viewpoint (Top): N-35
 Date and Time: 20/02/2019 16:00

FL, Max Aperture: 50mm, 1.75
 Tripod Height: 1.5m
 Viewpoint Ground Height: 24.1m AOD
 Viewpoint Grid Reference: 559985E, 183131N

Distance to Order Limits: 250m
 View Direction (Centre of View): NNE
 GPS Accuracy: 5m

Summer Viewpoint: N-35
 Date and Time: 04/06/2019 14:18

FL, Max Aperture: 50mm, 1.75
 Tripod Height: 1.5m
 Viewpoint Ground Height: 24.1m AOD
 Viewpoint Grid Reference: 559985E, 183131N

Distance to Order Limits: 250m
 View Direction (Centre of View): NNE
 GPS Accuracy: 5m



LOWER THAMES CROSSING
 5th Floor Beaufort House
 15 St Botolph Street
 London EC3A 7DT

Project: LOWER THAMES CROSSING
 Drawing title: Figure 7.17
 Representative Viewpoints - Winter and Summer Views
 Viewpoint N-35
 Sheet 3 of 3

Drawn	BB	Date - 05/08/2022	Status	Revision
Checked	HP	Date - 05/08/2022	S8	P01
Approved	SK	Date - 05/08/2022	Application Document No. TR010032/APP/6.2	
Drawing number		HE540039-CJV-ELS-SZP_ZZ000000_Z-DR-LV-00086		



P01	S8	05/08/2022	First Issued	BB	HP	SK
Rev	Status	Rev. Date	Purpose of revision	Drawn	Chck'd	Apprv'd

For location see Figure 7.16 - Visual Effects Drawing with Representative Viewpoint Locations

Camera: Canon EOS 6D MkII
 Lens: Canon EF 50mm f/1.8 STM
 Equipment: Manfrotto MA 454 Micro Positioning Plate
 Manfrotto SBH-100 Ball Head

Winter Viewpoint (Top): N-36
 Date and Time: 19/02/2019 11:11

FL, Max Aperture: 50mm, 1.75
 Tripod Height: 1.5m
 Viewpoint Ground Height: 10.8m AOD
 Viewpoint Grid Reference: 559626E, 184016N

Summer Viewpoint: N-36
 Date and Time: 04/06/2019 15:08

FL, Max Aperture: 50mm, 1.75
 Tripod Height: 1.5m
 Viewpoint Ground Height: 10.8m AOD
 Viewpoint Grid Reference: 559626E, 184016N

Client
national highways

LOWER THAMES CROSSING
 5th Floor Beaufort House
 15 St Botolph Street
 London EC3A 7DT

Project
LOWER THAMES CROSSING

Drawing title
 Figure 7.17
 Representative Viewpoints - Winter and Summer Views
 Viewpoint N-36
 Sheet 1 of 2

Drawn	BB	Date - 05/08/2022	Status	Revision
Checked	HP	Date - 05/08/2022	S8	P01
Approved	SK	Date - 05/08/2022	Application Document No. TR010032/APP/6.2	
Drawing number		HE540039-CJV-ELS-SZP_ZZ000000_Z-DR-LV-00087		



Rev	Status	Rev. Date	Purpose of revision	Drawn	Chck'd	Apprv'd
P01	S8	05/08/2022	First Issued	BB	HP	SK

For location see Figure 7.16 - Visual Effects Drawing with Representative Viewpoint Locations		Winter Viewpoint (Top): N-36 Date and Time: 19/02/2019 11:11		Summer Viewpoint: N-36 Date and Time: 04/06/2019 15:08	
Camera:	Canon EOS 6D MkII	FL, Max Aperture:	50mm, 1.75	Distance to Order Limits:	0m
Lens:	Canon EF 50mm f/1.8 STM	Tripod Height:	1.5m	Tripod Height:	1.5m
Equipment:	Manfrotto MA 454 Micro Positioning Plate	Viewpoint Ground Height:	10.8m AOD	View Direction (Centre of View):	SSE
	Manfrotto SBH-100 Ball Head	Viewpoint Grid Reference:	559626E, 184016N	Viewpoint Ground Height:	10.8m AOD
				Viewpoint Grid Reference:	559626E, 184016N
				GPS Accuracy:	5m



LOWER THAMES CROSSING
 5th Floor Beaufort House
 15 St Botolph Street
 London EC3A 7DT

Project: LOWER THAMES CROSSING
 Drawing title: Figure 7.17
 Representative Viewpoints - Winter and Summer Views
 Viewpoint N-36
 Sheet 2 of 2

Drawn	BB	Date	- 05/08/2022	Status	S8	Revision	P01
Checked	HP	Date	- 05/08/2022	Application Document No. TR010032/APP/6.2			
Approved	SK	Date	- 05/08/2022	Drawing number			
HE540039-CJV-ELS-SZP_ZZ000000_Z-DR-LV-00088							



Rev	Status	Rev. Date	Purpose of revision	Drawn	Chck'd	Apprv'd
P01	S8	05/08/2022	First Issued	BB	HP	SK

For location see Figure 7.16 - Visual Effects Drawing with Representative Viewpoint Locations

Camera: Canon EOS 6D MkII
 Lens: Canon EF 50mm f/1.8 STM
 Equipment: Manfrotto MA 454 Micro Positioning Plate
 Manfrotto SBH-100 Ball Head

Winter Viewpoint (Top): N-37
 Date and Time: 20/02/2019 16:30

FL, Max Aperture: 50mm, 1.75
 Tripod Height: 1.5m
 Viewpoint Ground Height: 18.5m AOD
 Viewpoint Grid Reference: 558868E, 182906N

Distance to Order Limits: 54m
 View Direction (Centre of View): N
 GPS Accuracy: 5m

Summer Viewpoint: N-37
 Date and Time: 04/06/2019 14:49

FL, Max Aperture: 50mm, 1.75
 Tripod Height: 1.5m
 Viewpoint Ground Height: 18.5m AOD
 Viewpoint Grid Reference: 558868E, 182906N

Distance to Order Limits: 54m
 View Direction (Centre of View): N
 GPS Accuracy: 5m



LOWER THAMES CROSSING
 5th Floor Beaufort House
 15 St Botolph Street
 London EC3A 7DT

Project: LOWER THAMES CROSSING
 Drawing title: Figure 7.17
 Representative Viewpoints - Winter and Summer Views
 Viewpoint N-37
 Sheet 1 of 2

Drawn	BB	Date - 05/08/2022	Status	Revision
Checked	HP	Date - 05/08/2022	S8	P01
Approved	SK	Date - 05/08/2022	Application Document No. TR010032/APP/6.2	
Drawing number HE540039-CJV-ELS-SZP_ZZ000000_Z-DR-LV-00089				



Rev	Status	Rev. Date	Purpose of revision	Drawn	Chck'd	Apprv'd
P01	S8	05/08/2022	First Issued	BB	HP	SK

For location see Figure 7.16 - Visual Effects Drawing with Representative Viewpoint Locations

Winter Viewpoint (Top): N-37
Date and Time: 20/02/2019 16:30

Camera: Canon EOS 6D MkII
Lens: Canon EF 50mm f/1.8 STM
Equipment: Manfrotto MA 454 Micro Positioning Plate
Manfrotto SBH-100 Ball Head

FL, Max Aperture: 50mm, 1.75
Tripod Height: 1.5m
Viewpoint Ground Height: 18.5m AOD
Viewpoint Grid Reference: 558868E, 182906N

Distance to Order Limits: 54m
View Direction (Centre of View): N
GPS Accuracy: 5m

Summer Viewpoint: N-37
Date and Time: 04/06/2019 14:49

FL, Max Aperture: 50mm, 1.75
Tripod Height: 1.5m
Viewpoint Ground Height: 18.5m AOD
Viewpoint Grid Reference: 558868E, 182906N

Distance to Order Limits: 54m
View Direction (Centre of View): N
GPS Accuracy: 5m



Client

LOWER THAMES CROSSING
5th Floor Beaufort House
15 St Botolph Street
London EC3A 7DT

Project

LOWER THAMES CROSSING

Drawing title

Figure 7.17
Representative Viewpoints - Winter and Summer Views
Viewpoint N-37
Sheet 2 of 2

Drawn	BB	Date - 05/08/2022	Status	Revision
Checked	HP	Date - 05/08/2022	S8	P01
Approved	SK	Date - 05/08/2022	Application Document No. TR010032/APP/6.2	
Drawing number				
HE540039-CJV-ELS-SZP_ZZ000000_Z-DR-LV-00090				



Rev	Status	Rev. Date	Purpose of revision	Drawn	Chk'd	Apprv'd
P01	S8	05/08/2022	First Issued	BB	HP	SK

For location see Figure 7.16 - Visual Effects Drawing with Representative Viewpoint Locations

Winter Viewpoint (Top): N-38
Date and Time: 22/02/2019 11:25

Camera: Canon EOS 6D MkII
Lens: Canon EF 50mm f/1.8 STM
Equipment: Manfrotto MA 454 Micro Positioning Plate
Manfrotto SBH-100 Ball Head

FL, Max Aperture: 50mm, 1.75
Tripod Height: 1.5m
Viewpoint Ground Height: 28.3m AOD
Viewpoint Grid Reference: 558887E, 184602N

Distance to Order Limits: 0m
View Direction (Centre of View): SSW
GPS Accuracy: 5m

Summer Viewpoint: N-38
Date and Time: 05/06/2019 13:22

FL, Max Aperture: 50mm, 1.75
Tripod Height: 1.5m
Viewpoint Ground Height: 28.3m AOD
Viewpoint Grid Reference: 558887E, 184602N

Distance to Order Limits: 0m
View Direction (Centre of View): SSW
GPS Accuracy: 5m



LOWER THAMES CROSSING
5th Floor Beaufort House
15 St Botolph Street
London EC3A 7DT

Project: LOWER THAMES CROSSING
Drawing title: Figure 7.17
Representative Viewpoints - Winter and Summer Views
Viewpoint N-38
Sheet 1 of 2

Drawn	BB	Date - 05/08/2022	Status	Revision
Checked	HP	Date - 05/08/2022	S8	P01
Approved	SK	Date - 05/08/2022	Application Document No. TR010032/APP/6.2	
Drawing number HE540039-CJV-ELS-SZP_ZZ000000_Z-DR-LV-00091				



Rev	Status	Rev. Date	Purpose of revision	Drawn	Chck'd	Apprv'd
P01	S8	05/08/2022	First Issued	BB	HP	SK

For location see Figure 7.16 - Visual Effects Drawing with Representative Viewpoint Locations		Winter Viewpoint (Top): N-38 Date and Time: 22/02/2019 11:25		Summer Viewpoint: N-38 Date and Time: 05/06/2019 13:22	
Camera:	Canon EOS 6D MkII	FL, Max Aperture:	50mm, 1.75	Distance to Order Limits:	0m
Lens:	Canon EF 50mm f/1.8 STM	Tripod Height:	1.5m	View Direction:	SSW
Equipment:	Manfrotto MA 454 Micro Positioning Plate	Viewpoint Ground Height:	28.3m AOD	(Centre of View):	SSW
	Manfrotto SBH-100 Ball Head	Viewpoint Grid Reference:	558887E, 184602N	GPS Accuracy:	5m



LOWER THAMES CROSSING
5th Floor Beaufort House
15 St Botolph Street
London EC3A 7DT

Project	LOWER THAMES CROSSING
Drawing title	Figure 7.17 Representative Viewpoints - Winter and Summer Views Viewpoint N-38 Sheet 2 of 2

Drawn	BB	Date	- 05/08/2022	Status	S8	Revision	P01
Checked	HP	Date	- 05/08/2022	Application Document No. TR010032/APP/6.2			
Approved	SK	Date	- 05/08/2022	Drawing number HE540039-CJV-ELS-SZP_ZZ000000_Z-DR-LV-00092			



Rev	Status	Rev. Date	Purpose of revision	Drawn	Chck'd	Apprv'd
P01	S8	05/08/2022	First Issued	BB	HP	SK

For location see Figure 7.16 - Visual Effects Drawing with Representative Viewpoint Locations

Camera: Canon EOS 6D MkII
 Lens: Canon EF 50mm f/1.8 STM
 Equipment: Manfrotto MA 454 Micro Positioning Plate
 Manfrotto SBH-100 Ball Head

Winter Viewpoint (Top): N-39
 Date and Time: 22/02/2019 11:10

FL, Max Aperture: 50mm, 1.75
 Tripod Height: 1.5m
 Viewpoint Ground Height: 26.9m AOD
 Viewpoint Grid Reference: 558690E, 184852N

Distance to Order Limits: 0m
 View Direction (Centre of View): W
 GPS Accuracy: 5m

Summer Viewpoint: N-39
 Date and Time: 05/06/2019 13:43

FL, Max Aperture: 50mm, 1.75
 Tripod Height: 1.5m
 Viewpoint Ground Height: 26.9m AOD
 Viewpoint Grid Reference: 558690E, 184852N

Distance to Order Limits: 0m
 View Direction (Centre of View): W
 GPS Accuracy: 5m



LOWER THAMES CROSSING
 5th Floor Beaufort House
 15 St Botolph Street
 London EC3A 7DT

Project: LOWER THAMES CROSSING
 Drawing title: Figure 7.17
 Representative Viewpoints - Winter and Summer Views
 Viewpoint N-39
 Sheet 1 of 2

Drawn	BB	Date - 05/08/2022	Status	Revision
Checked	HP	Date - 05/08/2022	S8	P01
Approved	SK	Date - 05/08/2022	Application Document No. TR010032/APP/6.2	
Drawing number		HE540039-CJV-ELS-SZP_ZZ000000_Z-DR-LV-00093		



Rev	Status	Rev. Date	Purpose of revision	Drawn	Chck'd	Apprv'd
P01	S8	05/08/2022	First Issued	BB	HP	SK

For location see Figure 7.16 - Visual Effects Drawing with Representative Viewpoint Locations

Winter Viewpoint (Top): N-39
Date and Time: 22/02/2019 11:10

Camera: Canon EOS 6D MkII
Lens: Canon EF 50mm f/1.8 STM
Equipment: Manfrotto MA 454 Micro Positioning Plate
Manfrotto SBH-100 Ball Head

FL, Max Aperture: 50mm, 1.75
Tripod Height: 1.5m
Viewpoint Ground Height: 26.9m AOD
Viewpoint Grid Reference: 558690E, 184852N

Distance to Order Limits: 0m
View Direction (Centre of View): W
GPS Accuracy: 5m

Summer Viewpoint: N-39
Date and Time: 05/06/2019 13:43

FL, Max Aperture: 50mm, 1.75
Tripod Height: 1.5m
Viewpoint Ground Height: 26.9m AOD
Viewpoint Grid Reference: 558690E, 184852N

Distance to Order Limits: 0m
View Direction (Centre of View): W
GPS Accuracy: 5m



LOWER THAMES CROSSING
5th Floor Beaufort House
15 St Botolph Street
London EC3A 7DT

Project: LOWER THAMES CROSSING
Drawing title: Figure 7.17
Representative Viewpoints - Winter and Summer Views
Viewpoint N-39
Sheet 2 of 2

Drawn	BB	Date - 05/08/2022	Status	Revision
Checked	HP	Date - 05/08/2022	S8	P01
Approved	SK	Date - 05/08/2022	Application Document No. TR010032/APP/6.2	
Drawing number HE540039-CJV-ELS-SZP_ZZ000000_Z-DR-LV-00094				

If you need help accessing this or any other National Highways information, please call **0300 123 5000** and we will help you.

© Crown copyright 2022.

You may re-use this information (not including logos) free of charge in any format or medium, under the terms of the Open Government Licence. To view this licence:

visit www.nationalarchives.gov.uk/doc/open-government-licence/

write to the **Information Policy Team, The National Archives, Kew, London TW9 4DU**, or email psi@nationalarchives.gsi.gov.uk.

Mapping (where present): © Crown copyright and database rights 2022 OS 100030649. You are permitted to use this data solely to enable you to respond to, or interact with, the organisation that provided you with the data. You are not permitted to copy, sub-license, distribute or sell any of this data to third parties in any form.

If you have any enquiries about this publication email info@nationalhighways.co.uk or call **0300 123 5000***.

*Calls to 03 numbers cost no more than a national rate call to an 01 or 02 number and must count towards any inclusive minutes in the same way as 01 and 02 calls. These rules apply to calls from any type of line including mobile, BT, other fixed line or payphone. Calls may be recorded or monitored.

Printed on paper from well-managed forests and other controlled sources when issued directly by National Highways.

Registered office Bridge House, 1 Walnut Tree Close, Guildford GU1 4LZ

National Highways Company Limited registered in England and Wales number 09346363